



Your Private Label
Supplements and
Cosmetic Products
Powered by
Silver Fir Branch Extract Belinal®



Innovating Natural Food Supplements
Grow Your Market Through Science



Abies Trade

2024

Abies Trade GmbH is trusted producer and supplier of the innovative silver fir branch extract Belinal®. We develop and manufacture supplements backed by proprietary scientific research and clinical studies.

Differentiating benefit and value proposition of Silver Fir Branch Extract Belinal®

THE STORY OF BELINAL® IS THE STORY OF A CHRISTMAS TREE

The symbolic meaning of Christmas trees originates in Celtic culture where the silver fir tree represents life, rebirth, and stamina needed to endure the winter months. Early Christians knew the symbolism of silver fir as they added candles and apples and held the silver fir tree as a symbol of life until nowadays. The healing properties of the silver fir branches has long been known to our ancestors. Silver fir branches used to be significantly consumed among people in mountain areas of Europe for the making of tea against common cold and rheumatism.

PURE NATURAL SOURCE – IT ALL BEGINS IN MOUNTAIN EU FOREST

High in the cold mountain Forests, only the most durable plants survive extreme conditions. This is the home of the silver fir tree that hides healthy ingredients developed in millions of years. Silver fir branches grown in the pristine European mountain forest are manually selected for the production of Belinal® extract. This way we ensure the highest quality of the silver fir tissues with accurate knowledge of their origin. The wood and branches we use are strictly from the regular felling only. We are taking care of nature and sustainability.

RACK TO NATURE



REGULATORY

Silver fir branches have never been used before to create a botanical extract. It's new to the world market. Silver fir branch extract has been approved in EU and published in Novel Food Catalog in July 2017 by the EFSA. Belinal® has self affirmed GRAS, the extract is recognized as safe by qualified experts based on publicly available scientific information.

R&D

Supplements are backed by proprietary sci-entific research, clinical studies and published articles. A range of products is formulated by renowned international experts and scientists working with our E&D team.

QUALITY AND SAFETY

Standard composition of Belinal® is characterized by specific lignans. For identification and quantification of the compounds, HPLC and spectrophotometry is used. All our production processes are environmentally friendly, pure water is used during extraction. Belinal® is naturally certified by **Ecocert Cosmos attestation nr°: 590442.**



Development and manufacturing of premium food supplements

We believe in research and innovation to improve people's wellbeing.



PRODUCT DEVELOPEMENT

With our service, you can offer your buyers **unique clean label products** that are safe, effective, and natural.



CONTRACT MANUFACTURING

Benefit from the services that we offer in our in-house production facility. **Low MOQ. Competitive prices.**



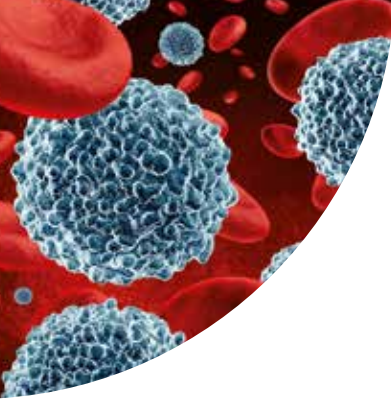
READY TO GO PRODUCTS & BEST SELLERS

Our unique clinically supported food supplements will solve consumer needs and boost your brand to leading positions.



POWDERED DRINKS – GALENIC AND FLAVOR TESTING

We provide galenic testing and flavor optimization to ensure the best performance of your powder drinks before launching them to the market.



Reduces tiredness and fatigue.

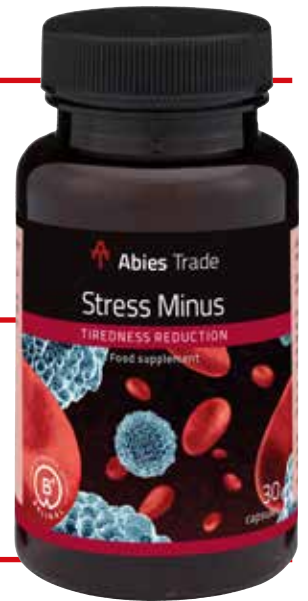
ANTI-STRESS & TIREDNESS REDUCTION

Stress Minus

- REDUCES OXIDATIVE STRESS
- REDUCES TIREDNESS AND FATIGUE
- SUPPORTS THE IMMUNE SYSTEM

Vitamin C contributes to the reduction of tiredness and fatigue

60 % of consumers globally say they suffer from stress. 30 % of them say it is chronic.



Recommended for: people with demanding and stressful life. To fight tiredness.
 Health claim: contribute to the reduction of tiredness and to oxidative stress reduction.
 Mechanism of action: Anti-oxidant activity, inside cell anti-oxidant activity

Active ingredients:	Amount per one capsule	NRV (%)
Belinal® Silver Fir Branch Extract (<i>Abies alba Mill.</i>)	150 mg	
Vitamin C from Acerola	100 mg	125
Ginseng extract	50 mg	
Vitamin B6	3 mg	214
Vitamin B3	10 mg	63

Free from sweeteners, lactose or gluten. Suitable for vegetarians.

DIRECTIONS: 1 to 3 tablets daily taken with water.

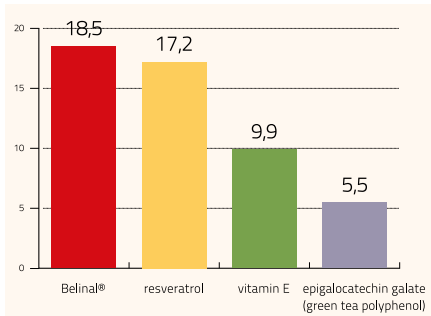


Capsules	X
Jars	
Pre-Filled Caps	X lemon, orange, forest fruits

IN VITRO STUDY – SILVER FIR BRANCH EXTRACT BELINAL

Belinal® is a powerful natural free radical scavenger. It neutralizes free radicals before they can cause any damage by oxidative stress. As a super anti-oxidant Belinal® stimulates cells to increase their own anti-oxidative power and it captures free radicals in the blood stream.

HYDROXYL RADICAL SCAVENGING ACTIVITY OF BELINAL®



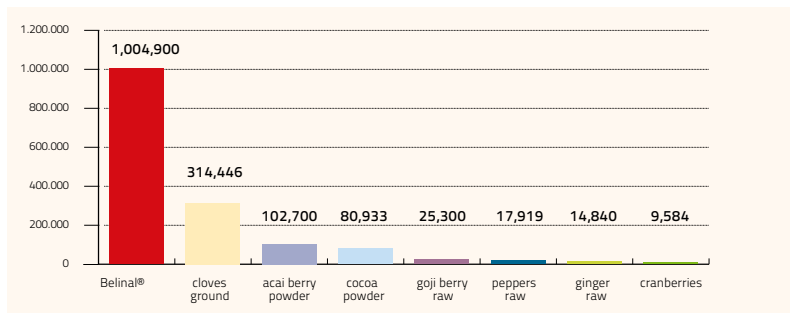
Anti-oxidant activity* of Belinal® extract is significantly higher compared to other frequently used anti-oxidants.

* Anti-oxidant activity (hydroxyl radical scavenging activity) expressed as reciprocal value of IC₅₀ (100/IC₅₀) which represents the concentration needed for 50 % inhibition of hydroxyl radical.

ORAC – OXIGEN RADICAL ABSORPTION CAPACITY OF BELINAL

CONCLUSION

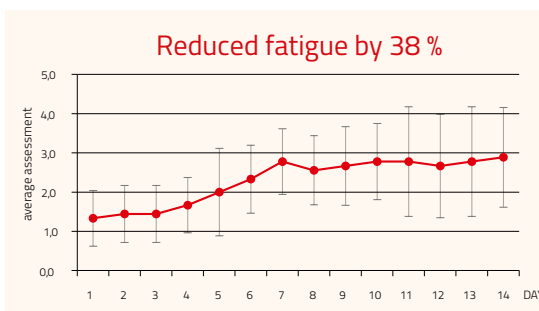
Belinal® – silver fir branch extract has significantly higher anti-oxidative potential compared to TOP HIGH ORAC Value Anti-oxidant Foods published by NIH and USDA. ORAC value of Belinal® is 1.004.900 units expressed in µmol Trolox/ 100 g (see figure below).



Belinal® – ORAC Oxygen Radical Absorbance Capacity

CLINICAL STUDY ON 10 VOLUNTEERS – PRODUCT STUDY

Ten volunteers were involved in the research study during a 14-day period. They were asked to take 1 tablet three times daily at intervals of 6 hours. Reduction of fatigue by 38 % was reported at the end of the period.



Average scores of reduced fatigue with standard deviation. ANOVA test and Bonferroni post-hoc analysis (p < 0,01).



Maintenance of normal blood glucose levels.

METABOLIC. WEIGHT MANAGEMENT

Gluco Minus

400 MG, 60 CAPSULES

- HELPS MAINTAIN HEALTHY GLUCOSE LEVELS
- LOWERS GLYCEMIC INDEX OF A MEAL
- PREVENTS TYPE 2 DIABETES

Chromium contributes to the maintenance of normal blood glucose levels.



Glucominus® powered by Belinal® contributes to anti-diabetic activity through various mechanisms

Recommended for: people interested in weight loss.

Health claims: contributes to the normal blood glucose levels.

Mechanism of action: Inhibition of digestion enzymes alpha-amylase and alpha-glucosidase, increased glucose uptake into muscle cells via activation of AMPK pathway.

Active ingredients:	Amount per one capsule	NRV (%)
Belinal® Silver Fir Branch Extract (<i>Abies alba Mill.</i>)	75 mg	/
Chromium	32,5 mg	81

Free from sweeteners, lactose or gluten. Suitable for vegetarians.

DIRECTIONS: One tablet with a glass of water 15 minutes before a larger meal, two times daily.

Consult your pharmacist or personal doctor if you have type 2 diabetes.

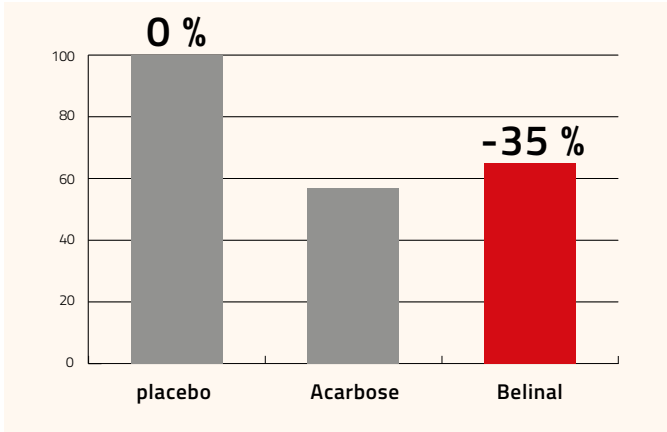


Capsules	X
Jars	
Pre-Filled Caps	X lemon, orange, ginger

SILVER FIR BRANCH EXTRACT – BELINAL MECHANISM OF ACTION – CLINICAL STUDY

An excessive consumption of carbohydrates with high glycemic index can lead to weight gain, glyceamic disorders and type 2 diabetes.

Belinal® inhibits the enzymes alpha amylase and alpha glucosidase that break down carbohydrates, so that not all carbohydrates are converted to glucose at one time. This can help you maintain a healthy glucose level and control the carbohydrate intake. Belinal® reduces the postprandial hyperglycemia induced by starchy meal.



Main ingredients of Belinal®, as reported in scientific literature, may also have other mechanisms of anti-diabetic activity:

- Increased glucose uptake into muscle cells via activation of AMPK pathway.
- Increased glucose uptake into fat cells (adipocytes) due to increased translocation of glucose transporters GLUT4 and increased expression of adiponectin.
- Protection and regeneration of pancreatic β -cells.
- Inhibition of glucose transporters (SGLT1 and SGLT2) in the intestinal wall.

CLINICAL STUDY ON 32 VOLUNTEERS BLOOD GLUCOSE LEVELS DURING THE 30 DAYS PERIOD – PRODUCT STUDY

32 diabetes type 2 volunteers were administrating three tablets of Belinal® gluco daily, 15 minutes before a meal, continuously for 30 days and parallel with the anti-diabetic medicine prescribed by the treating physician.

Volunteers had prescribed anti- diabetic therapy with parallel supplementation of Belinal® gluco. Blood glucose levels were measured in the morning daily, before a first meal at the same time. The average blood glucose concentrations during the 30-days period decreased by 16 %.

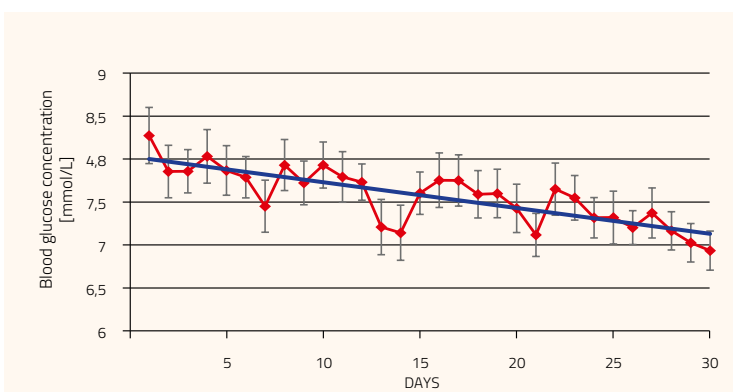


Figure 1: Concentration of blood glucose during the 30 day use of Belinal® gluco. (average of 32 volunteers who measured glucose every day). Error bars represent standard error of mean.



For healthy skin and hair.

SKIN. BEAUTY FROM WITHIN

Vegan Collagen Booster

300 MG, 30 CAPSULES

- REJUVENATES SKIN THROUGH THE BLOODSTREAM
- REDUCES WRINKLES, IMPROVES SKIN HYDRATION
- PROTECTS SKIN AGAINST OXIDATIVE STRESS CAUSED BY THE SUN
- SUPPORTS HAIR GROWTH AND HAIR CARE

Vitamin A, Riboflavin (B2), Niacin (B3), Biotin and Zinc contribute to the maintenance of normal skin. Zinc and Biotin contribute to the maintenance of normal hair



Collagen Boost can be taken on a daily basis, as part of your regular beauty care.

Feed your skin and hair from within. Vegan!

Recommended for: anti-aging and skin protection. Health claims: contribute to the maintenance of normal skin. Mechanism of action: regeneration and growth of collagen and elastin, anti-inflammatory activity, anti-oxidant activity.

Active ingredients:	Amount per one capsule	NRV (%)
Belinal® Silver Fir Branch Extract (<i>Abies alba Mill.</i>)	100 mg	/
Vitamin C – Acerola Fruit Extract	32 mg	81
Vitamin A	640 µg	40
B3 – Niacin	11,2 mg	80
Zinc	7 mg	70
B2 – Riboflavin	1,4 mg	70
Biotin	50 µg	100
B5 – Pantothenic acid	6 mg	100

Free from sweeteners, lactose or gluten. Suitable for vegetarians.

DIRECTIONS: One capsule taken daily with water.

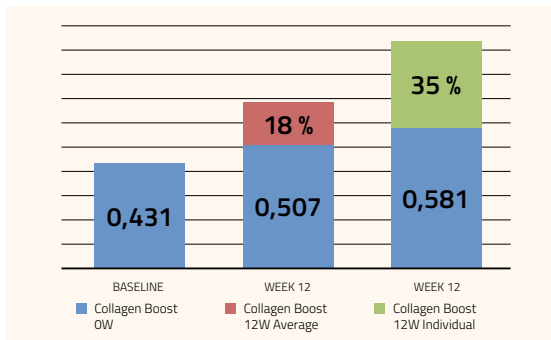
Capsules	X
Jars	X
Pre-Filled Caps	X lemon, orange, ginger



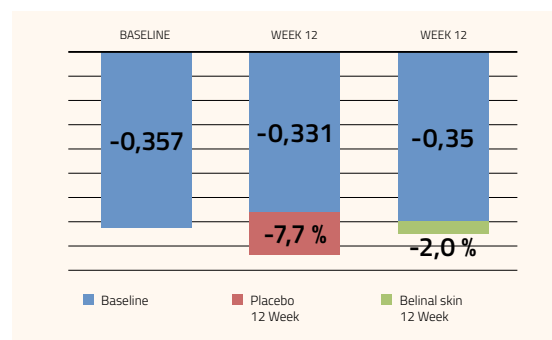
CLINICAL STUDY ON 20 VOLUNTEERS – IMPROVEMENT OF SKIN ELASTICITY AND SKIN FIRMNESS – PRODUCT STUDY

Placebo controlled clinical study demonstrates that the oral supplementation improves skin parameters and skin health in humans after 12 weeks of treatment of one capsule daily. The improvement of the skin was observed on different parameters, such as hydration, TEWL, wrinkles area, and elasticity, measured by a certified dermatologist. The improvement of individual measured parameters after 12 weeks differed significantly from day 1 and in addition showed a good trend of superiority to placebo. The highest effect was seen on elevated skin elasticity and firmness, followed by improvement of TEWL (skin barrier) and in decrease of wrinkles, measured in wrinkle count and wrinkle area.

Relative changes in skin elasticity (%)



Relative changes in skin firmness (%)





Muscle recovery and endurance.

SPORT. ENERGY & ENDURANCE

Sport Recovery

305 MG, 30 CAPSULES

- FOR NORMAL MUSCLE FUNCTION
- RECOVERY AND REDUCTION OF TIREDNESS
- BOOSTS MUSCLE RECOVERY AND ENDURANCE
- REDUCES TIREDNES AND MUSCLE DAMAGE AFTER SPORT ACTIVITY
- PROTECTS MUSCLE CELLS

Vitamin B6, B12 and C contribute to the reduction of tiredness and fatigue.

Magnesium contributes to the normal muscle function



Sport recovery is safe for athletes, with none of its ingredients banned by athletic body Banned Substance List of WADA.

Recommended for: people in need of energy and stamina. Athletes and recreational.

Health claim: contribute to the normal muscle function.

Mechanism of action: Anti-oxidant activity, Anti-inflammatory activity, Muscle and tissue recovery by synthesis of collagen and elastin.

Active ingredients:	Amount per one capsule	NRV (%)
Belinal® Silver Fir Branch Extract (<i>Abies alba Mill.</i>)	180 mg	/
Vitamin C – Acerola Fruit Extract	40 mg	50
Magnesium	80 mg	21
Zinc	4 mg	40
Vitamin B6	0,7 mg	50
Vitamin B12	1,25 µg	50

Free from sweeteners, lactose or gluten. Suitable for vegetarians.

DIRECTIONS: One to three capsules daily taken with water.

Capsules	X
Jars	
Pre-Filled Caps	X lemon, orange, forest fruits

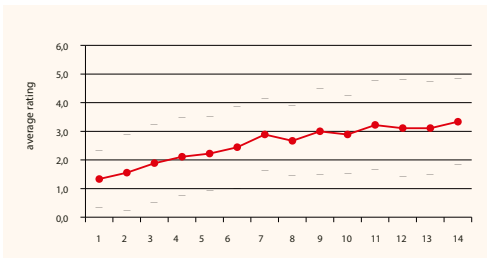


SPORT RECOVERY SIGNIFICANTLY IMPROVES PHYSICAL CONDITION OF ATHLETES – PRODUCT STUDY

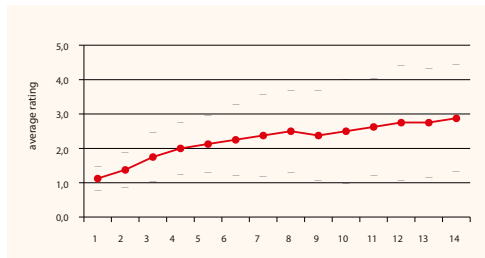
Sport recovery is a scientifically developed formula with anti-oxidant and recovery activity that helps eliminate excessive amount of free radicals, protects muscles, improves immune function and physical performance.

Ten athletes were involved in the research study during a 14-day preparation period. Volunteers were asked to take one capsule three times daily at intervals of 6 hours. Every day, athletes assessed regeneration and endurance with a mark of 1 to 5, where 1 indicated that there was no change and number 5 indicated maximum rate of change.

Recovery of muscles was improved by 45 %



Endurance was enhanced by 36 %



Average score with standard deviation.
ANOVA test and Bonferroni post-hoc analysis
(* p < 0,05; ** p < 0,01).

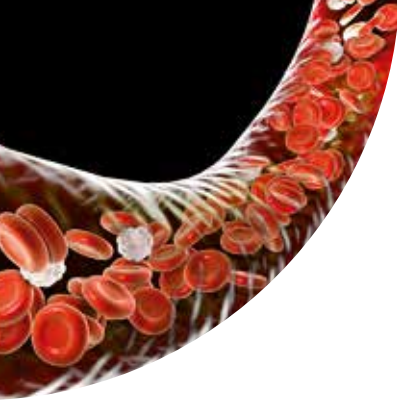
From the diagrams above it is evident that all scores increased with time of taking Sport recovery. Athletes consuming Sport recovery daily detected significant positive changes in all sensations.

MECHANISM OF ACTION

During intensive physical training muscle injury occurs as a result of mechanical forces on the muscle fibers, as well as the oxidative stress, which results in muscle cell damage. The second stage involves inflammation in muscles after an intense workout, which also causes damage to the muscle and can take up to few days. From this perspective, consumption of Sport recovery is highly beneficial to athletes since its effectiveness is a consequence of at least four mechanisms of action:

- Anti-oxidant activity
- Anti-inflammatory activity
- Immune modulatory activity
- Muscular contraction and relaxation.





For normal blood cholesterol levels.

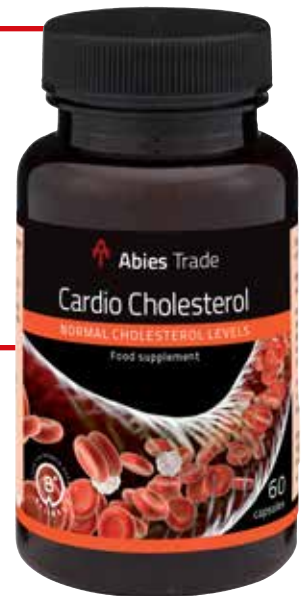
CARDIOVASCULAR HEALTH & CHOLESTEROL

Cardio Cholesterol

800 MG, 60 CAPSULES

- HELPS MAINTAIN NORMAL BLOOD CHOLESTEROL LEVELS
- PROTECTS BLOOD VESSELS AGAINST ATHEROSCLEROSIS
- LOWERS LDL CHOLESTEROL LEVELS

Plant sterols contribute to the maintenance of normal blood cholesterol levels.



Supplement can be used safely and effectively alongside statins or fibrates and produces a significant additive benefit.

Recommended for: people with cardiovascular problems.

Elevated cholesterol levels.

Health claims: contributes to the normal blood cholesterol levels.

Contribute to the normal function of the heart.

Mechanism of action: Inhibition of atherosclerotic vascular plaques,

Anti-oxidant activity, Anti-inflammatory activity.

Active ingredients:	Amount per one capsule	NRV (%)
Belinal® Silver Fir Branch Extract (<i>Abies alba Mill.</i>)	90 mg	/
Plant sterols	400 mg	/
Vitamin B1	0,55 mg	50

Free from sweeteners, lactose or gluten. Suitable for vegetarians.

DIRECTIONS: One tablet with a meal, two times daily.

Capsules	X
Jars	
Pre-Filled Caps	X lemon, orange, ginger



SILVER FIR BRANCH EXTRAT BELINAL® DEMONSTRATE SIGNIFICANT PROTECTION OF ARTERIES

Belinal® is a natural plant polyphenolic extract, containing specific lignans, phenolic acids, catechins and sterols with known biological, pharmacological and clinical activities demonstrating cardioprotective properties.

Cardiovascular diseases are the main cause of death worldwide. Atherosclerosis is the major precursor of serious cardiovascular conditions and can be described as a chronic inflammatory process in arterial walls that is caused by the accumulation of macrophages and oxidized low-density lipoproteins. Atherosclerosis is caused by elevated total cholesterol and low-density lipoprotein cholesterol. The condition is a chronic disease showing no symptoms for decades.

Several risk factors, such as hypertension, inflammation and oxidative stress, accelerate the disease.

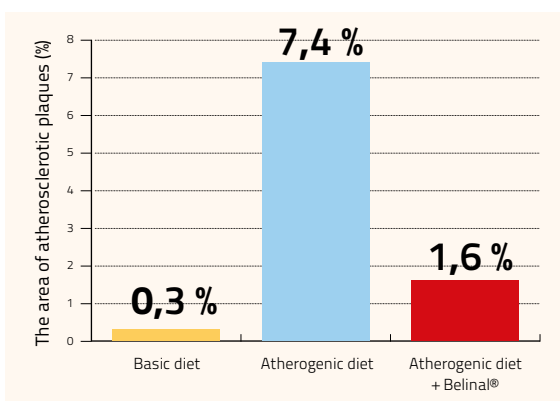
IN VIVO TREATMENT ANIMAL STUDY – PROTECTION OF ARTERIES

Guinea pigs exhibit a cholesterol profile that most closely resembles a human profile when challenged with a high-cholesterol diet. The guinea pigs were shown to be one of the best models of atherosclerotic damage. Similarly to humans, these animals have most of their blood cholesterol in LDL form.

In this study, guinea pigs were divided into three groups. First group had access to a basic diet, second group had access to an atherogenic diet (basic diet with yolk, lard, cholesterol and fructose) and third group had access to an atherogenic food supplemented with Belinal®, 10 mg per kg of body weight. After 8 weeks, atherosclerotic plaque area on abdominal aortas of guinea pigs and relaxation response were measured.

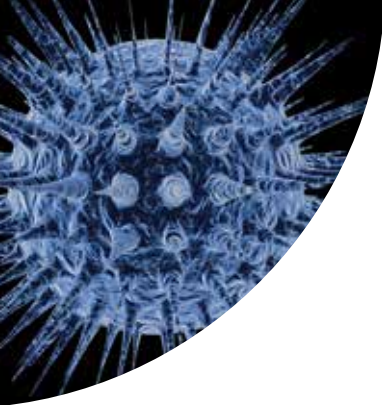
RESULTS

We observed that Belinal® reduced the atherosclerotic plaque formation by 80%. We demonstrated that Belinal® prevents morphological and functional changes of the arterial wall of guinea pigs' aortas caused by an 8-week atherogenic diet.



Average score with standard deviation.
ANOVA test and Bonferroni post-hoc analysis
(* p < 0,05; ** p < 0,01).





Natural immune system booster.

Immuno Boost

400 MG, 30 CAPSULES

- **BOOSTS IMMUNE SYSTEM AT EARLY SIGNS OF A COMMON COLD OR FLU**

Vitamins B6, C, D3, Selenium and Zinc contribute to the normal function of the immune system.

Natural food supplement to boost your immune system and help you fight the common cold and flu.



Active ingredients:	Amount per one capsule	NRV (%)
Belinal® Silver Fir Branch Extract (<i>Abies alba Mill.</i>)	220 mg	/
Vitamin C – Dog Rose fruit extract	50 mg	63
Purple Coneflower extract	50 mg	/
Zinc	5 mg	50
Vitamin E	2 mg	17
Vitamin B6	1 mg	71
Vitamin D3	3 µg	60
Selenium	20 µg	36

Free from sweeteners, lactose or gluten.

DIRECTIONS: One capsule every six hours. Three capsules daily.

LIMITATIONS: Use for children under 12 year of age is not recommended.

Capsules	X
Jars	
Pre-Filled Caps	X lemon, orange, ginger

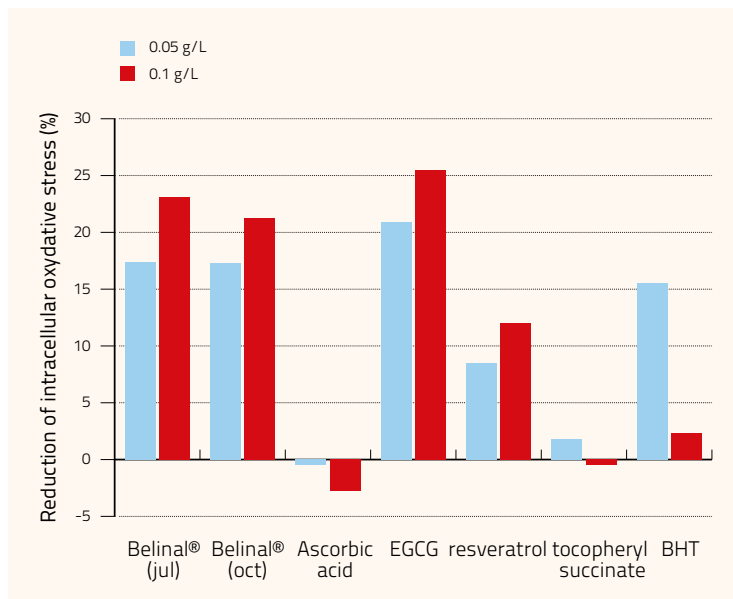


SILVER FIR BRANCH EXTRAT BELINAL® DEMONSTRATES SIGNIFICANT INSIDE CELL ANTI-OXIDANT ACTIVITY

In this study, we determined the intracellular anti-oxidant activity in in-vivo conditions. As a model system, we used the living eukaryotic cells of yeast *Saccharomyces cerevisiae*. Belinal® anti-oxidant activity was compared with some other commonly used anti-oxidants.

Belinal® (both industrial batches) had greater anti-oxidant activity than the other comparator anti-oxidants (Ascorbic acid – Vitamin C, Resveratrol, BHT), with the exception of EGCG which had comparable activity as Belinal®.

This way, we also obtained indirect evidence that the components of Belinal® successfully pass through the cell membrane of a eukaryotic cell.





Improve concentration and cognitive function.

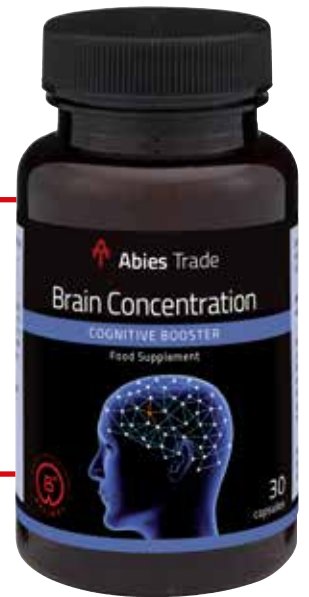
COGNITIVE HEALTH

Brain Concentration

400 MG, 30 CAPSULES

- **STAY SHARP AND FOCUSED**
- **MAINTAIN HEALTHY BRAIN FUNCTION**

Zinc and Iodine contribute to normal cognitive function.
Pantothenic acid contributes to normal mental performance.



Brain Concentration is safe as parallel therapy for patients with cognitive disabilities and provides additional benefit.

Recommended for: people with increased mental requirements. Elderly people. Provides focus and concentration.

Health claims: contributes to normal psychological function

Mechanism of action: Inhibition of atherosclerotic vascular plaques, Anti-oxidant activity, Anti-inflammatory activity.

Active ingredients:	Amount per one capsule	NRV (%)
Belinal® Silver Fir Branch Extract (<i>Abies alba Mill.</i>)	120 mg	/
Providing pure polyphenols	84 mg	/
Bacopa extract	80 mg	/
Ginkgo extract*	40 mg	/
Pantothenic acid – Vitamin B5	6 mg	100
Zinc	7 mg	70
Niacin - Vitamin B3	11,2 mg	70
Iodine	150 µg	100

* See national classification of Ginkgo extract.

Free from sweeteners, lactose or gluten. Suitable for vegetarians.

DIRECTIONS: 1–2 capsules daily with a glass of water.

Capsules	X
Jars	
Pre-Filled Caps	X lemon, orange, ginger



SILVER FIR BRANCH EXTRAT BELINAL® BRAIN IS AN EFFICIENT VASORELAXANT OF BRAIN ARTERIES

Belinal® is an effective relaxant of human brain arteries. Study on isolated human brain arteries shows that silver fir branch extract relaxes smooth muscle cell rings through prostacyclin release mechanisms (PGI₂) and/or through endothelium derived hyperpolarizing factor (EDHF). The study shows that Belinal® causes significant relaxation of the brain vascular rings opposed to ginkgo EGb 761®, which contracts the rings. Highest percentage of relaxation was 15.3 %.

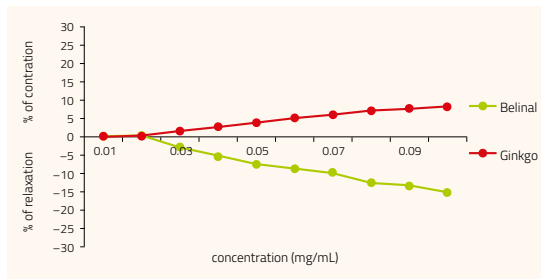


Diagram 1: Belinal®-relaxation of human brain arteries compared to Ginkgo

MECHANISMS OF ACTION:

- Vasorelaxation of smooth muscle cells through prostacyclin release mechanisms (PGI₂) and/or through endothelium derived hyperpolarizing factor EDHF.
- Anti-oxidant activity.
- Anti-inflammatory activity.

FAQ:

Application: healthy brain aging, improvement of cognitive function at all ages, better attention and concentration, prevention of cerebrovascular diseases.

Can you supplement Brain Concentration alongside prescription drugs?

Yes, it can be used safely and effectively alongside prescription drugs for cerebrovascular diseases.



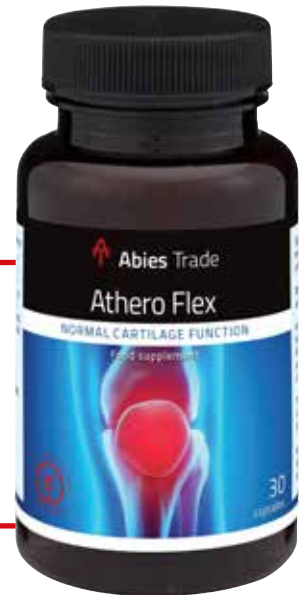
Improved joint health for a life in motion.

JOINT HEALTH

Athero Flex

400 MG, 30 CAPSULES

- IMPROVES JOINT MOBILITY
- NATURAL, YET EFFECTIVE IN LOWERING OF JOINT PAIN
- PROVIDES PARALLEL THERAPY FOR OSTEOARTHRITIS
- IMPROVES ATHLETIC PERFORMANCE



Athero flex alleviates stressed joints, helps patients with painful joints and osteoarthritis and provides support for athletes in their sport activities.

Recommended for: People with joint problems. Elder people and athletes. Health claims: Contributes to normal collagen formation for the normal function of cartilage. Contributes to maintenance of normal connective tissues. Mechanism of action: Synthesis of chondrocytes. Anti-oxidant activity, Anti-inflammatory activity.

Active ingredients:	Amount per one capsule	NRV (%)
Belinal® Silver Fir Branch Extract (<i>Abies alba Mill.</i>)	140 mg	/
Providing pure polyphenols	98 mg	/
Collagen type II	140 mg	/
Chondrotine Sulphate	40 mg	/
Hyaluronic acid	20 mg	/
Boswellia serrata AKBA	50 mg	/
Copper	1 mg	100
Manganese	2 mg	100
Vitamin C	40 mg	50

DIRECTIONS: 1 capsule daily with a glass of water.

Capsules	X
Jars	X
Pre-Filled Caps	X lemon, orange, forest fruits

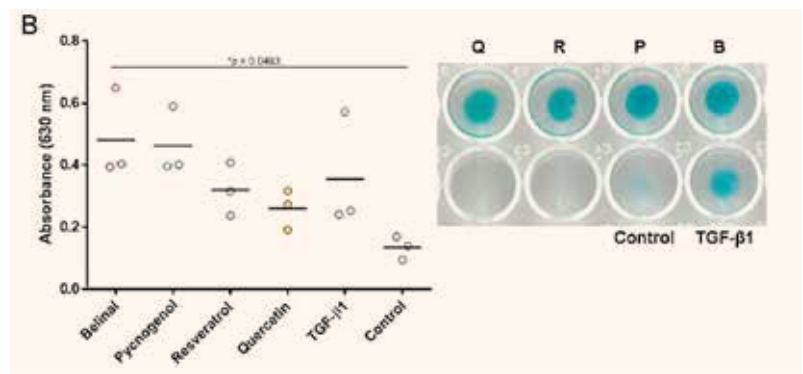


SILVER FIR BRANCH EXTRAT EFFECTS OF THE BELINAL® ON CHONDROGENESIS UNDER INFLAMMATORY CONDITIONS

Inflammation has been shown to have a pivotal role in cartilage degradation, with particular interest focused on the anti-inflammatory actions of natural compounds, such as polyphenols. Polyphenols represent a wide variety of compounds that are found in fruit, vegetables, red wine, tea, and plant oils. Inflammatory conditions were induced using lipopolysaccharide from *Escherichia coli*.

Figure 1: Effects on chondrogenesis under inflammatory conditions

Q – Quercetin, R- Resveratrol, P- Pycnogenol, B - Belinal



Lipopolysaccharides were added to primary mesenchymal stem cells from the patients with hip osteoarthritis, which were left for 18 hours to simulate inflammatory conditions. After 18 hours, the cell medium was changed and the tested polyphenolic extracts and polyphenols were added at 375 mg/mL. Chondrogenesis was higher in primary human stem cells treated with Belinal® in comparison with Pycnogenol® and significantly enhanced in comparison to Resveratrol, Quercetin and control. See diagram 1

HEALTH CLAIMS (EFSA):

Vitamin C contributes to normal collagen formation for the normal function of cartilage. Manganese contributes to the normal formation of connective tissue. Copper contributes to maintenance of normal connective tissues.

MECHANISMS OF ACTION:

- Helps rebuild cartilage and connective tissues.
- Improves athletic performance.
- Beneficial influence on the osteoarthritis.
- Beneficial influence on the cartilage breakdown.
- Anti-inflammatory activity ensures noticeable pain reduction.
- Contributes to the normal formation of connective tissue.
- Contributes to normal collagen formation for the normal function of cartilage.

FAQ:

Application: improvement of joint mobility, regeneration of joint physical function, lowering of joint pain, parallel therapy for osteoarthritis, improvement of athletic performance.

Can you supplement Athero flex alongside prescribed drugs?

Yes, it can be used safely and effectively alongside prescribed medication for osteoarthritis.



Fast regeneration of cells and tissues.

Cell Recovery



ADVANCED FORMULA THAT ACCELERATE RECOVERY AFTER CHRONIC STRESS, PANDEMIC, ILLNESS OR INJURY. DEVELOPED TO STRENGTHEN BODY'S DEFENSE AND PROMOTE FAST CELL RECOVERY. THIS SUPERCHARGED FORMULA ARMS THE BODY WITH VITAL MICRONUTRIENTS TO ACHIEVE PEAK WELLNESS AND RENEWAL.

60 % of consumers globally say, they suffer from chronic stress, pandemic or illness recovery.

Key benefits:

- Recovers cells after illness or injury
- Returns body to natural state of balance
- Improves well-being.

Health claim: Oxidative stress reduction. Tiredness reduction.

Mechanism of action: Anti-oxidant activity, Anti-inflammatory activity, Energy and balance.

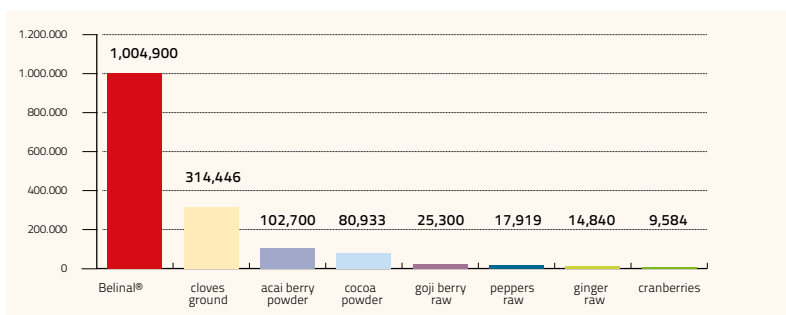
Active ingredients:	One capsule	NRV (%)
Belinal® Silver Fir Branch Extract (<i>Abies alba Mill.</i>)	140 mg	/
Vitamin C	40 mg	50
Zinc	4 mg	40
Magnesium	80 mg	21
B6	0,7 mg	50
B12	1,25 µg	50

DIRECTIONS: 1–3 capsules daily.

30 HPMC vegetarian capsules

ORAC – OXIGEN RADICAL ABSORPTION CAPACITY OF BELINAL®

Belinal® – silver fir branch extract has significantly higher anti-oxidative potential compared to TOP HIGH ORAC Value Anti-oxidant Foods published by NIH and USDA. ORAC value of Belinal® is 1.004.900 units expressed in µmol Trolox/100 g (see figure below).



Belinal® – ORAC Oxygen Radical Absorbance Capacity

Scientifically designed 2 phase detox formula

Liver Detox and Protect

PHASE I - LIVER DETOXIFICATION OF FAT SOLUBLE TOXINS INTO LESS HARMFUL BYPRODUCTS. BUT THAT CAN STILL POSE A TOXIC THREAT TO THE BODY.

PHASE II – NEUTRALIZING TOXIC BYPRODUCTS, MAKING THEM WATER-SOLUBLE. THAT WAY THEY CAN BE EXCRETED FROM THE BODY.

MOST FORMULAS ON THE MARKET PERFORM DETOXIFICATION IN THE PHASE I, AND TOXINS REMAIN IN THE BODY. OUR FORMULA NEUTRALIZES HARMFUL BYPRODUCTS AND THAT WAY THEY CAN BE EXCRETED FROM THE BODY.



Unique 2 phase detox formula will help protect the liver against free radicals, support healthy liver function, promote detoxification and excretion of harmful substances and thus improves overall mood.

Key benefits:

Cleanses and detoxifies the liver
Supports healthy liver function
Protects the liver from oxidation

Mechanism of action:

2 Phase Liver detox, Anti-oxidant activity.

Active ingredients:	One capsule	NRV (%)
L-glutamine	150 mg	/
Milk Thistle extract	150 mg	/
Belinal® Silver Fir Branch Extract	80 mg	/
Artichoke extract	65 mg	/
MSM	60 mg	/
Vitamin E	5 mg	50
Vitamin B2	1,4 mg	100
Vitamin B6	1,4 mg	100
Vitamin B12	1,25 µg	50
Folid acid	200 µg	100

DIRECTIONS: 2 capsules daily.

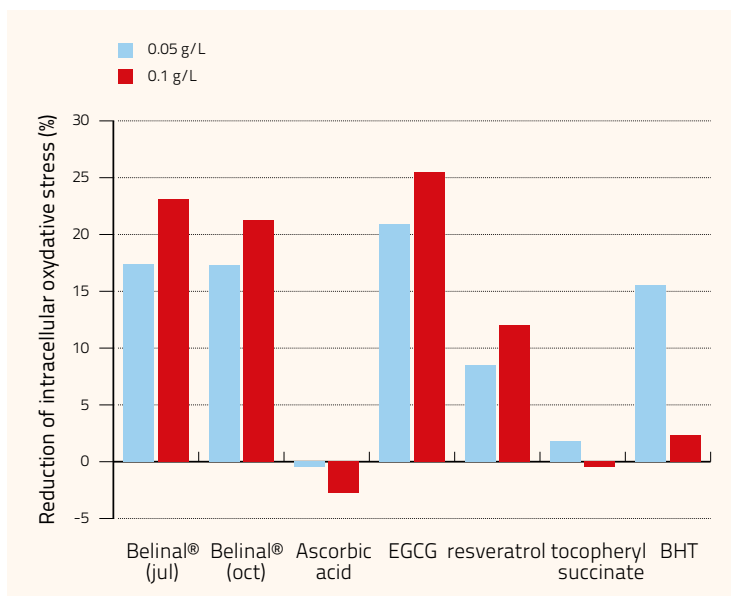
60 HPMC vegetarian capsules

SILVER FIR BRANCH EXTRACT BELINAL® DEMONSTRATE SIGNIFICANT INSIDE CELL ANTI-OXI-DANT ACTIVITY

In the study, we determined the intracellular anti-oxidant activity of the Silver Fir Branch extract Belinal® in *in-vivo* conditions.

Belinal® (both industrial batches) had greater anti-oxidant activity than the other comparator anti-oxidants (Ascorbic acid – Vitamin C, Resveratrol, BHT), with the exception of EGCG which had comparable activity as Belinal®.

This way, we also obtained indirect evidence that the components of Belinal® successfully pass through the cell membrane of a eukaryotic cell.





With melatonin, lavender and lemon balm

Relax and Sleep



**UNIQUE FORMULA TO SHORTEN TIME TO FALL ASLEEP AND REDUCTION OF STRESS AT THE SAME TIME.
HELPS CALM NERVES AND PROMOTES RELAXATION**

Key benefits:

- Improves well-being and relaxation
- Promotes better sleep
- Recovers from stress and anxiety

Health claim: Contributes to the reduction of time taken to fall asleep, oxidative stress reduction.

Mechanism of action: Shorten time to fall asleep, Oxidative stress reduction, Energy and relaxation.

Active ingredients:	One capsule	NRV (%)
Lemon balm	100 mg	/
Lavender extract	100 mg	/
Belinal® Silver Fir Branch Extract	80 mg	/
Magnesium	60 mg	16
Zinc	10 mg	100
Vitamin B6	1,4 mg	100
Melatonin	0,4 mg	/

DIRECTIONS: 1 capsule before a sleep

30 HPMC vegetarian capsules

Powdered omega-3 EPA & DHA enhanced with Q10 and silver fir branch polyphenols

Omega-3 Cardio

POWDERED OMEGA 3 HAS FIVE TIMES HIGHER BIOAVAILABILITY THAN STANDARD TRADITIONAL LIQUID OMEGA-3 SOFT GELS.



Key benefits:

Supports cardiovascular function, reduces the risk of coronary heart disease
Supports brain health
Supports vision health.

Health claim: Contributes to the normal function of the heart. Contributes to the normal function of the brain.

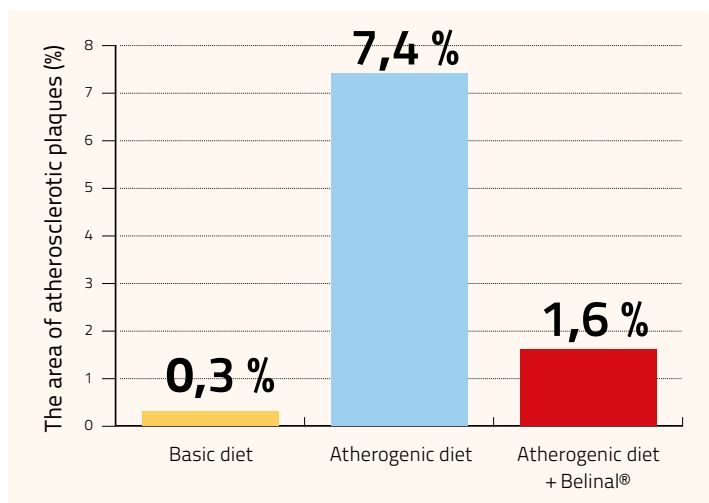
Mechanism of action: Anti-inflammatory activity, cardio vascular protection, brain protection.

Active ingredients:	One capsule	NRV (%)
Omega-3 powder EPA & DHA	260 mg	/
Belinal® Silver Fir Branch Extract	120 mg	/
Coenzyme Q10	25 mg	
Vitamin E	5 mg	50
Vitamin B1	1,4 mg	100

DIRECTIONS: 2 capsules daily
60 HPMC vegetarian capsules

SILVER FIR BRANCH EXTRACT BELINAL® REDUCES ATHEROSCLEROTIC PLAQUE FORMATION

Belinal® reduced the atherosclerotic plaque formation by 80 %. We observed that Belinal® reduced the atherosclerotic plaque formation by 80 %. We demonstrated that Belinal® prevents morphological and functional changes of the arterial wall of guinea pigs' aortas caused by an 8-week atherogenic diet.





Advanced formula – powdered refreshing drink with premium BioCell® Collagen

Collagen beauty lift – drink

ACTIVE BEAUTY FROM WITHIN FORMULA – NATURAL AROMA OF ORANGE, GINGER AND BEETROOT.

Key benefits:

Reduces appearance of pores and wrinkles
Collagen
Rejuvenates tired and aging skin.

Health claim: Contribute to the maintenance of a healthy skin and healthy hair.

Mechanism of action: Collagen boosting, Anti-oxidant activity.



Active ingredients:	One sachet 4,5 g	NRV (%)
Biocell collagen	1000 mg	
Belinal® Silver Fir Branch Extract	100 mg	/
Vitamin C - acerola	32 mg	40
B3 – Niacin	11,2 mg	70
Zinc	7 mg	70
Pantothenic acid	6 mg	100
B2 – Riboflavin	1,4 mg	100
Vitamin A	640 µg	80
Biotin- B7	50 µg	100

DIRECTIONS: 1 dose daily

Scoop – 5 g

FORMULA COLLAGEN BOOSTER IMPROVES SKIN PARAMETERS

Placebo controlled clinical study demonstrates that the oral supplementation with Collagen booster improves skin parameters and skin health after 12 weeks of treatment administrating one capsule daily.

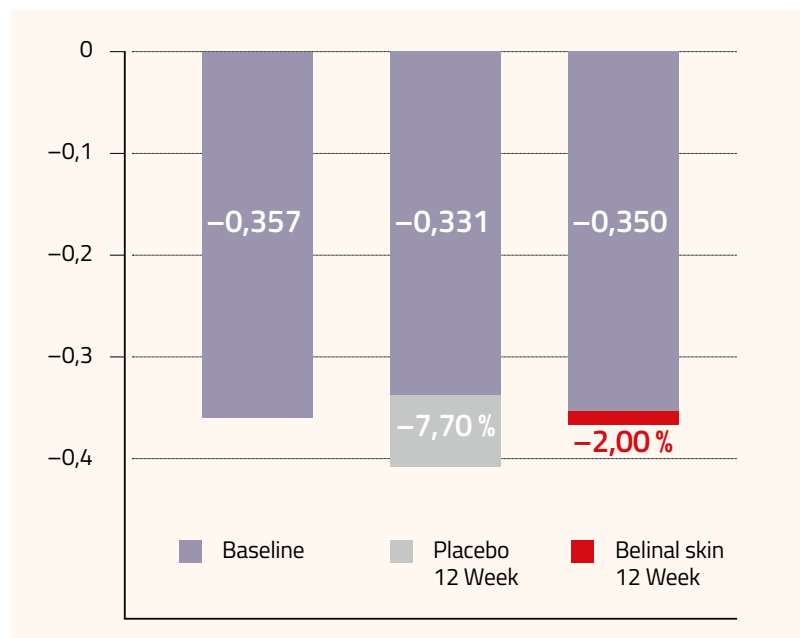
Skin's firmness is determined by structural proteins collagen and elastin. Firmness is also one of the most important aspects of beautiful, healthy looking skin.

COLLAGEN BOOSTER IMPROVES:

- Skin firmness by 5 %.
- Skin elasticity by 18 %
- The skin elasticity in individual improved by 36.4 %.

See diagram on right.

Radical changes in skin firmness (%)





BIOCELL® COLLAGEN IMPROVES SKIN PARAMETERS

BioCell Collagen is manufactured via a patented procedure that includes filtration, purification, concentration, hydrolysis and sterilization to ensure consistent quality and safety. This process reduces the size of its molecules to a specific range thereby increasing the bioavailability of the bioactive constituents found within the unique biomolecular composition of BioCell Collagen.

A clinical study on BioCell Collagen showed that a daily intake of one gram of BioCell Collagen significantly reduced skin dryness and facial wrinkles in association with an increase in blood circulation and collagen content in the skin. (Schwartz and Park, 2012).

BIOCELL® COLLAGEN IS CLINICALLY SHOWN TO:

- Reduce fine lines and wrinkles
- Increase collagen content in the dermis
- Increase blood microcirculation of facial skin

BEFORE AND AFTER BIOCELL COLLAGEN

Week 0



Week 12

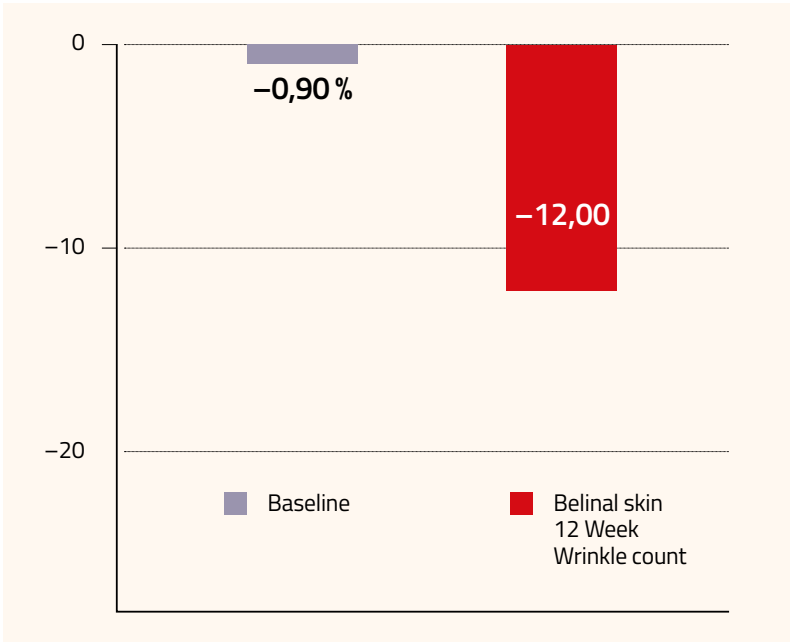


Confidential – (c) BioCell
Technology 2013

SILVER FIR BRANCH EXTRACT BELINAL® REDUCES WRINKLES BY 12 %

Placebo controlled clinical study demonstrates that the oral supplementation with Silver Fir Branch extract Belinal® reduces fine lines and wrinkles by 12 % after 12 weeks of treatment.

Belinal® – Relative changes in wrinkles



Scientific herbal formula to support prostate health, improve men's health and well-being.

Pro-power

PROSTATE HEALTH, TESTOSTERONE AND LIBIDO BOOSTER

Testosterone declines with age, but it is a slow decline. Testosterone decreases 1 % to 2 % per year. More than 33 % of men over 45 may have lower than normal testosterone levels. Symptoms of low testosterone may include: Loss of muscle mass, difficulty concentrating, low libido and erectile dysfunction.

The prostate is prone to three main conditions:

Prostatitis: infection or inflammation of the prostate.

Benign Prostatic Hyperplasia: aging-related enlargement of the prostate gland.

Prostate cancer: the growth of cancerous cells inside the prostate.

Key benefits:

Reduces prostate discomfort

Inhibits inflammation and oxidation

Boosts testosterone levels and improves libido.

Health claim: Contributes to the normal testosterone levels, protection of cells from oxidative stress.

Mechanism of action: Prostate enlargement inhibition, testosterone boosting, anti-inflammatory activity, anti-oxidant activity.



Active ingredients:	One capsule	NRV (%)
L-arginin	170 mg	
Belinal® Silver Fir Branch Extract (<i>Abies alba Mill.</i>)	100 mg	/
Ginseng extract	80 mg	
Maca	80 mg	
Fenugreek extract	50 mg	
Pumkin seed extract	50 mg	
Saw palmeto extract	40 mg	/
Zinc	10 mg	100
Magnesium	60 mg	16
Vitamin B12	2,5 µg	100

DIRECTIONS: 1–2 capsules daily.
30 HPMC vegetarian capsules

SILVER FIR BRANCH EXTRACT BELINAL® IMPROVES MEN'S HEALTH

From the scientific overview, Silver fir branch extract Belinal® could play an important role in prevention of prostatitis, benign prostatic hyperplasia and prostate cancer by various mechanism. Furthermore Belinal® extract shows anti-inflammatory activity using more than one mechanism/pathway to inhibit inflammatory processes.

Belinal® is an effective relaxant of human arteries, supporting men's health. Study on isolated human brain arteries shows that silver fir branch extract relaxes smooth muscles through prostacyclin release mechanisms (PGI₂) and/or through endothelium derived hyperpolarizing factor (EDHF).

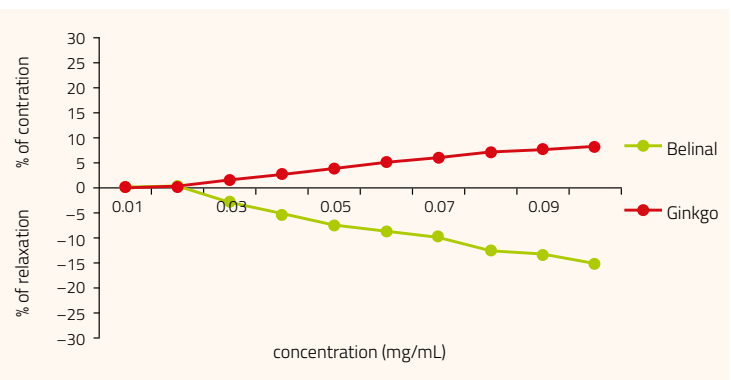


Diagram 1: Silver fir branch extract Belinal® – relaxation of arteries by 15%.

Wild Trees

TRIPLE ACTION DAY CREAM



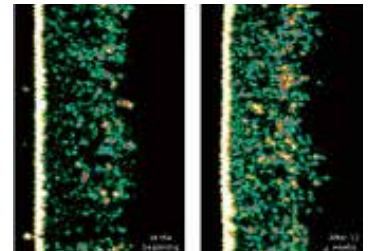
NATURAL DAY FACE ANTI-AGING CREAM WITH TRIPLE EFFECT:

- REDUCES WRINKLES BY 35 %
- INCREASES HYDRATION AND SKIN BARRIER BY 19 %
- LIGHTENS UP BROWN SPOTS BY 41 %

The unique active ingredient silver fir branch extract Belinal® boosts collagen and elastin growths.

The skin is shiny and tight after use. With regular use, the cream promotes formation of collagen and elastin matrix in the dermis.

Reduction of wrinkles and regeneration of collagen and elastin by 35%



DIRECTIONS:

We recommend three months of use. Absorbs quickly and provides a velvety soft skin feeling.

RESULTS OF TOPICAL PLACEBO CONTROLLED STUDY

Silver fir branch extract is an innovative cosmetic active ingredient. A unique combination of lignans, phenolic acids, flavonoids and polysaccharides of Belinal® provides unmatched benefits for skin health: collagen and elastin growth, reduction of photo damage, and improved hydration. Belinal® is an Ecocert Cosmos certified natural ingredient.

A clinical study demonstrated that silver fir branch extract Belinal® is a very effective anti-aging active ingredient when applied topically.

After 12 weeks of topical treatment compared to placebo, Belinal® in a cosmetic product had significantly decreased depth and volume of wrinkles, improved skin's moisture and had significant anti-photo ageing effect.

The silver fir branch extract significantly prevents, reduces and treats unwanted skin changes in cosmetic and dermatological use.

INCI INGREDIENTS

AQUA*, MACADAMIA TERNIFOLIA SEED OIL*, GLYCERIN*, GLYCERYL STEARATE SE*, BUTYROSPERMUM PARKII BUTTER*/**, ABIES ALBA WOOD EXTRACT*, PANTHENOL, MYRISTYL MYRISTATE*, BENZYL ALCOHOL, GLYCERYL CAPRYLATE*, XANTHAN GUM*, DEHYDROACETIC ACID, CITRUS AURANTIUM DULCIS PEEL OIL EXPRESSED*/**, LACTIC ACID*, MENTHA PIPERITA OIL*, LIMONENE***

* Ingredients from natural origin (98,0 %)

** Ingredients from organic agricultural source (5,0 %)

*** Components from natural essential oils

** Ingredients from organic agricultural source (5,0 %)

*** Components from natural essential oil

QUALITY – COSMOS ECOCERT & ECOGEA CERTIFICATES

The face Triple action day cream contains 98 % of natural ingredients that rejuvenate, restore and suppress cellular aging.

- Cream is natural-organic certified by Ecogea
- Silver fir branch extract is Cosmos certified
- Free from synthetic fragrances, colorants, and preservatives
- Free from parabens
- Free from mineral oils, silicones and polyethylene glycols
- Dermatologically tested





Wild Trees

ATOPIC

NATURAL CREAM FOR DRY, SENSITIVE AND ITCHY SKIN THAT IS PRONE TO ATOPIC DERMATITIS. FOR FACE AND BODY.

- MOISTURIZES AND NOURISHES DRY SKIN
- RELIEVES ITCHING AND REDNESS
- NOURISHES THE SKIN WITH ATOPIC DERMATITIS AND PSORIASIS

Particularly soothing relief for eczema, dry, itchy and irritated skin. Suitable for all skin types including sensitive skin. The unique formula creates an optimal environment for regeneration of the skin thanks to a silver fir branch extract.

Reduced size of hyperpigmentation and lightening of brown spots by 41 %



DIRECTIONS:

We recommend three months of use. Absorbs quickly and provides a velvety soft skin feeling.

INCI INGREDIENTS

AQUA, MACADAMIA TERNIFOLIA SEED OIL, GLYCERIN, GLYCERYL STEARATE SE, BUTYROSPERMUM PARKII BUTTER, OENOTHERA BIENNIS OIL, GLYCERIN, ABIES ALBA WOOD EXTRACT, PANTHENOL, MYRISTYL MYRISTATE, DEHYDROACETIC ACID, BENZYL ALCOHOL, GLYCERYL CAPRYLATE, XANTHAN GUM, ALOE BARBADENSIS LEAF JUICE, ALLANTOIN, LACTIC ACID.

QUALITY – COSMOS ECOCERT & ECOGEE CERTIFICATES

- Cream is natural-organic certified by ECOGEE
- Silver fir branch extract is Cosmos certified
- Free from synthetic fragrances, colorants, and preservatives
- Free from natural essential oils
- Free from parabens
- Free from mineral oils, silicones and polyethylene glycols (PEG)
- Dermatologically tested





Wild Trees

ACNE

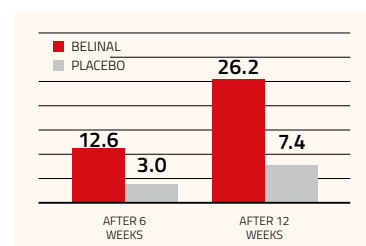


NATURAL GEL CLEARS AND PREVENTS ACNE:

- HELPS SPEED ACNE HEALING
- PREVENT FUTURE BREAKOUTS
- MOISTURIZES AND NOURISHES OILY SKIN

Water based oil free breakthrough formula is designed to effectively targets two primary causes of acne, clogged pores and inflammation. Gentle skin care for oily, acne prone sensitive skin, and for young adult acne sufferers.

Improved moisture and skin barrier by 19%



DIRECTIONS:

We recommend three months of use. Absorbs quickly and provides hydration.

INCI INGREDIENTS

AQUA, PELARGONIUM GRAVEOLENS FLOWER WATER, NIACINAMIDE, ABIES ALBA WOOD EXTRACT, GLYCERIN, CARRAGEENAN, SODIUM HYDROXIDE, GLYCOLIC ACID, SODIUM SALICYLATE, XANTHAN, HYALURONIC ACID, DEHYDROACETIC ACID, BENZYL ALCOHOL.

QUALITY – COSMOS ECOCERT & ECOGEA CERTIFICATES

- Gel is natural-organic certified by ECOGEA
- Silver fir branch extract is Cosmos certified
- Free from synthetic fragrances, colorants, and preservatives
- Free from natural essential oils
- Free from parabens
- Free from mineral oils, silicones and polyethylene glycols (PEG)
- Dermatologically tested



GMP Contract Manufacturing: Full Service and Flexible Solutions in 30 days

Project management

We provide an individual approach for each client to achieve the successful implementation of contract production projects. A personal approach in your project gives you control and effective communication at all stages of the production. We deliver fast production time.

We produce various forms of supplements, such as:

- Capsules
- Powders
- Push caps

Our production is done according to HACCP, ISO 22000 and GMP standards, which ensure traceability and safety of selected materials at every step.

- Low MOQ
- Competitive prices
- Production - full service in 30 days

NEW PRODUCT DEVELOPMENT

We are an expert in the field of **customized product development**, offering a range of services to meet your specific needs.

We have a **proprietary scientific research** and a dedicated **R&D department** that can develop **exclusive formulas** for you, following the **EU regulation** and the latest nutrition standards. We can also provide you with **galenic testing** and **formula optimization** to ensure the best performance and stability of your products before launching them to the market.

With our service, you can offer your buyers **unique clean label products** that are safe, effective, and natural.

We work closely with you to understand your vision, target audience, and competitive advantage. We also offer you flexible and competitive pricing, fast delivery, and excellent customer support.

Your Unique Product Growth through innovation and scientific research

Proprietary studies

- Clinical trials
- Published scientific articles

Claims and Certificates

- Health Claims
- Natural Certification
- GMP

Dosage form

- Capsules
- Jars
- Filled Caps

Proprietary published articles in scientific magazines:

1. Debeljak J, Ferk P, Čokolič M, Zavratnik A, Tavčar Benkovič E, Kreft S, et al. **Randomised, double blind, cross-over, placebo and active controlled human pharmacodynamic study on the influence of silver fir wood extract (Belinal) on post-prandial glycemic response.** *Pharmazie*. 2016; 71(10).
2. Drevenšek G, Lunder M, Tavčar Benkovič E, Mikelj A, Štrukelj B, Kreft S. **Silver fir (*Abies alba*) trunk extract protects Guinea pig arteries from impaired functional responses and morphology due to an atherogenic diet.** *Phytomedicine*. 2015; 22(9).
3. Drevenšek G, Lunder M, Tavčar Benkovič E, Štrukelj B, Kreft S. **Cardioprotective effects of silver fir (*Abies alba*) extract in ischemic-reperfused isolated rat hearts.** *Food Nutr Res*. 2016; 60(1).
4. Tavčar Benkovič E, Žigon D, Mihailović V, Petelinc T, Jamnik P, Kreft S. **Identification, in vitro and in vivo Antioxidant Activity, and Gastrointestinal Stability of Lignans from Silver Fir (*Abies alba*) Wood Extract Belinal.** *J Wood Chem Technol* [Internet]. 2017 Nov 2;37(6):467–77. Available from: <https://www.tandfonline.com/doi/full/10.1080/02773813.2017.1340958>
5. Lunder M, Roškar I, Hošek J, Štrukelj B. **Silver Fir (*Abies alba*) Extracts Inhibit Enzymes Involved in blood Glucose Management and Protect against Oxidative Stress in High Glucose Environment.** *Plant Foods for Human Nutrition*. 2019 Mar; 74(1): 47–53.
6. Sirse M, Fokter K S, Strukelj B, Zupan J. **Silver Fir (*Abies alba*) Polyphenolic Extract (Belinal) Shows Beneficial Influence on Chondrogenesis In Vitro under Normal and Inflammatory Conditions.** *Molecules* 2020, 25, 4616.
7. Kreft S. **Phytochemical, pharmacological and clinical studies of an extract prepared from silver fir branches Belinal® (*Abies alba*).** *Biologia Serbica*, 2021, 43(1): 57-62.
8. Stojanov S, Ravnikar M, Berlec A, Kreft S. **Interaction between silver fir (*Abies alba*) wood water extract Belinal® and lactobacilli.** *Pharmazie* 76 (2021)



Abies Trade

CERTIFICATES:



Abies Trade GmbH

Bahnhofplatz 5 ▪ 9020 Klagenfurt am Woerthersee ▪ Austria

www.abiestrade.com orders@abiestrade.com