



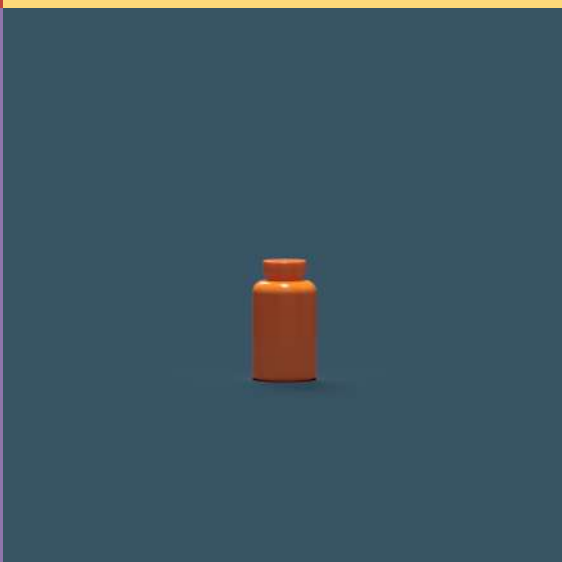
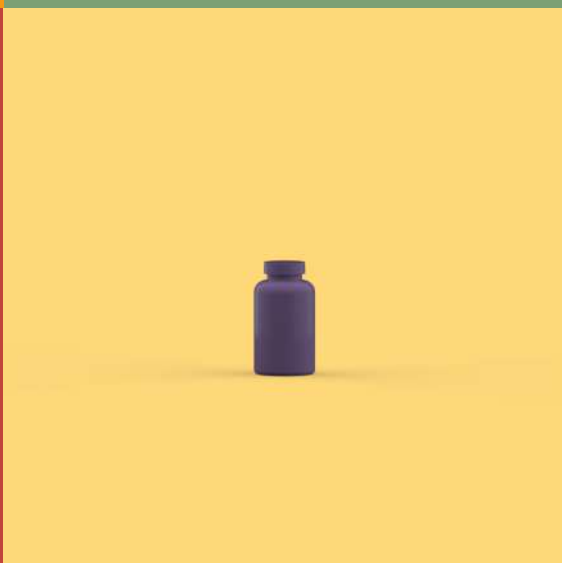
MASTERCHEM

a Logoplaste Group company

Supplement packaging 2026







Everything in one place...

By choosing Masterchem Logoplaste, you gain not just a packaging manufacturer, but a partner who understands the specifics of the dietary supplements market and takes full responsibility for every stage of the project. You save time, avoid mistakes, and receive a consistent, refined solution that strengthens your brand.

Why trust us?

Producing packaging for dietary supplements requires more than just aesthetics — it demands knowledge of regulations, ergonomics, consumer safety, and market trends. Our team provides expert guidance from concept to delivery and takes full responsibility for all key tasks.

Packaging Design and Concept



We create unique, functional designs that make products stand out on the shelf and strengthen brand image. We help select the right form, materials, and solutions that meet market requirements.

Prototyping and Visualization



We prepare 3D models that allow you to evaluate appearance and functionality before production. This helps you avoid costly mistakes and make informed decisions.

Logistics and Quality Control



We oversee every stage of the process — from material selection and production to on-time delivery. Each step meets the highest quality standards, so you can have complete peace of mind.

**Choose comprehensive, professional support
in dietary supplement packaging production.**

Why is this especially important in dietary supplements?

In this industry, packaging plays a key role:

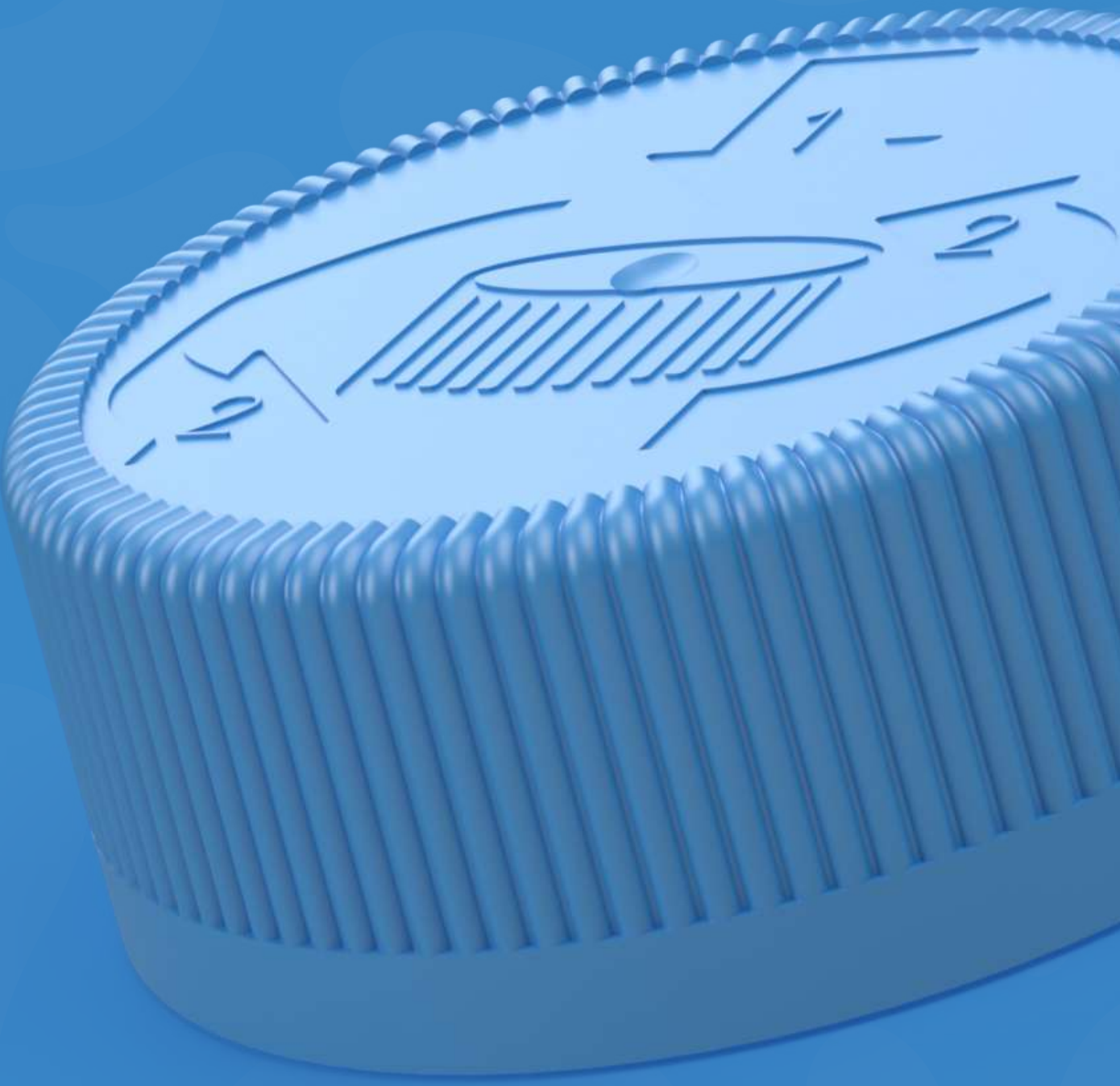
- it protects the product and active ingredients,
- it meets strict quality standards
- it builds customer trust and strengthens brand differentiation.

With our experience, you can be confident that each of these goals will be achieved.

Instead of wasting time coordinating multiple suppliers, entrust everything to a single, reliable partner.

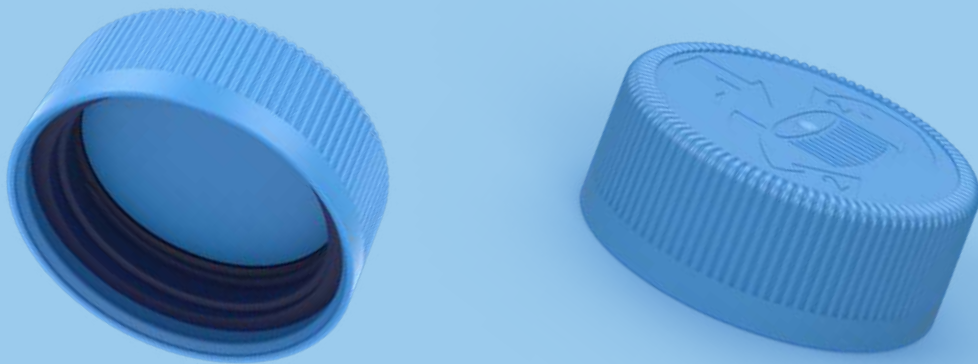
We take care of every detail — from concept to finished packaging.





Why do dietary supplements require CRP caps?

CRP (Child-Resistant Protection) with a “push-and-turn” mechanism protect the contents from accidental opening by children. This is why they have become a standard in the dietary supplements industry – combining convenience, design, and the highest level of safety.



Two solutions, one goal – protection and convenience.

- **Thread 38/400** – smaller packaging: tablets and capsules, vitamin gummies, children’s supplements..
- **Thread 45/400** – larger PET jars: multivitamins, collagen and protein, herbal supplements, premium products.

Safety certified by ISO 8317

Our CRP caps ensure that supplements are protected from child access and meet the highest quality standards – from the first opening to the very last serving..

CRP caps are now an essential element of professional supplementation. They protect, build trust, and help your brand stand out from the competition.

VitaPacker

Shaping the Power of Tomorrow



VitaPacker

Shape



Material

PET rPET



Index

Capacity

Thread

Weight

Height

Width

Quantity per pallet

PU-0663

75

38/400

12,0

81,7

45,4

6188

PU-0664

100

38/400

12,0

86,8

47,2

5376

PU-0666

125

38/400

15,0

97,0

48,5

4444

PU-0667

150

38/400

21,0

104,4

50,3

3900

PU-0669

200

38/400

24,0

109,5

58,7

2860

PU-0670

225

38/400

21,0

108,5

60,9

2760

PU-0671

250

45/400

28,0

111,4

63,9

2300

PU-0672

300

45/400

32,0

119,0

69,0

1782

PU-0673

400

45/400

32,0

130,9

72,7

1440

PU-0674

500

45/400

32,0

130,0

80,0

1152

Caps



**BE003
CRP**

Thread 38/400



I0007

Thread 38/400



**I0007
ribbed**

Thread 38/400



AL008 short

Thread 38/400



**ZB45Z
CRP**

Thread 45/400



I0006

Thread 45/400



**I0006
ribbed**

Thread 45/400

Packaging that drives sales. Your brand's calling card.

The dietary supplements market is growing at a rapid pace. Consumers today expect not only effectiveness, but also convenience of use, safety, and aesthetics. Manufacturers must therefore meet both strict quality standards and rising customer expectations. In this context, packaging becomes an integral part of the product — its business card and a guarantee of quality.

Our packaging solutions address real market needs — delivering durability, visual appeal, and functionality, while strengthening your brand image in the highly competitive supplements market.



In the supplements industry, there is no place for compromise when it comes to safety. That's why all our packaging is manufactured in compliance with **ISO 15378:2017** and **ISO 15593:2008** standards, as well as GMP/GHP systems. We use only certified raw materials that are safe for contact with food and active ingredients.

Available security options:

- **Tamper-evident ring** – protects against opening and provides a visible guarantee of first use
- **CRP safety caps** – child-resistant closure system that prevents opening by children.
- **Induction seal** – airtight closure ensuring product protection against air and moisture.
- **EPE liner** – lightweight foam liner that protects contents against leaks and contamination.
- **Various dispensing options** – possibility to adjust the type of applicator or dosing system to the product's specific requirements.



Power Packer



Power Packer



Shape



Material

PET rPET



Index	Capacity	Thread	Weight	Height	Width	Quantity per pallet
PU-0631	1000	100/400	60,0	132,7	112,0	624
PU-0632	1250	100/400	60,0	155,0	112,0	546
PU-0633	1500	100/400	60,0	165,7	120,0	396
PU-0635	2200	100/400	100,0	202,7	131,5	330
PU-0636	2500	100/400	100,0	205,7	137,0	250
PU-0637	3000	100/400	100,0	218,7	147,0	225
PU-0638	4000	110/400	140,0	254,0	157,0	114
PU-0643	6000	127/400	190,0	282,7	181,0	112
PU-0647	8000	127/400	220,0	324,0	195,0	72
PU-0569	10000	127/400	220,0	336,7	195,0 x 195,0	72

Caps



AK003

Thread 100/400



NK100

Insert
for 100/400 thread



FL012

Thread 110/400



NA110

Thread 110/400



GR027

Thread 127/400



FL007

Thread 127/400



NA127

Thread 127/400









Protein ice cream

Take care of yourself... and treat yourself to something delicious!

Feel the pleasure without the guilt. Refreshing, creamy ice cream packed with protein — the perfect dessert for those who are active and care about their shape.

Sweetness that supports your goals!

Ingredients:

-  500 g strawberries
-  200 ml heavy cream (30%)
-  200 g light cottage cheese
-  50 g protein powder (any flavor)
-  Sweetener or honey to taste
-  A splash of milk (optional)

Prep:

1. Pour the heavy cream over the strawberries, then add the cottage cheese, protein powder, and sweetener/honey.
2. Blend everything into a smooth, creamy mixture.
3. Pour into containers or ice cream molds.
4. Place in the freezer for about 2 hours and enjoy a healthy, refreshing dessert!

It's done!

After two hours, you can enjoy a delicious and healthy treat.

SWEETS



MASTERCHEM

a Logoplaste Group company



15378:2017



15593:2008



9001:2015



14001:2015



Masterchem
Logoplaste Sp. z o.o.

 **online store**

ul. Przylep-Solidarności 86d
66-015, Zielona Góra, Poland

www.mch.com.pl
info@mch.com.pl

www.esklep.mch.com.pl | esklep@mch.com.pl

