

Created by **Nature**
Curated by Ambe

Ambe[®]



Sedex[®]

Ambe Phytoextracts Pvt. Ltd.

✉ info@ambe-group.com 🌐 www.ambe-group.com

About us

For over 15 years, Ambe Phytoextracts has been dedicated to transform the finest of nature to create premium ingredients. Nestled amidst the majestic Himalayas, our commitment to quality is unwavering. We're proud to hold industry-leading accreditations that ensures every Ambe ingredient meets the highest international standards for quality, efficacy and consistency.

Our Commitment to Quality

Non-GMO, Non-ETO, Non-Irradiated: Our products adhere to stringent standards, ensuring they are free from genetically modified organisms, ethylene oxide treatment and irradiation.

Global Compliance: We comply with major international regulations, allowing us to supply our premium ingredients to leading companies worldwide.

Ambe works with over 60 different plant-based compounds, including rare and unique ones. Our expertise lies in creating efficacious and safe ingredients that meet the diverse needs of the health and wellness industry.

Discover the Ambe Difference

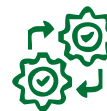
Our dedication to nature, coupled with our commitment to excellence, makes us a trusted partner for companies and brands all around the world.



300+
employees



2 manufacturing
facilities



1500 MT RM/year
1800 MT finished products/year



R&D and Product
Development Labs



Global
markets served

Our range of clinically tested ingredients



Phaseo^{lean}[®]

(White Kidney Bean Extract)

Clinically proven to support weight management.
Effective in reducing BMI, Skinfold fat thickness and
waist/hip/thigh circumferences.

Pinorox[®]

(Pine Bark Extract)

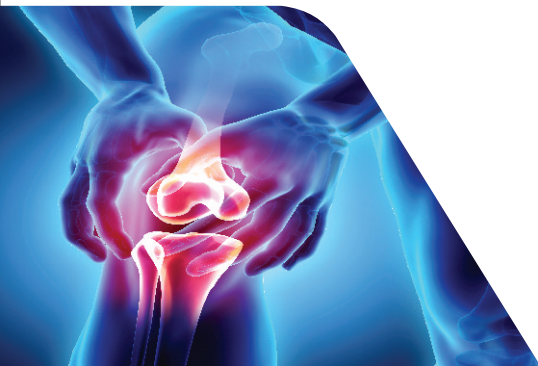
Clinically evaluated in boosting physical performance.
Shown improvement in endurance and stamina, while reducing
exercise induced oxidative stress and fatigue.



AKBA Ultra[®]

(Boswellia serrata Extract)

Clinically tested in management of osteoarthritis symptoms.
It promotes Joints flexibility & comfort, Eases stiffness in joints &
improves physical functioning or activities significantly in OA patient.



Bio-Immune[®]

(Andrographis paniculata Extract)

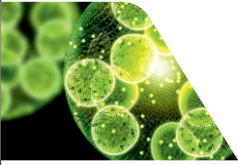
Clinically tested in the management of symptoms associated
with Uncomplicated URTI such as sore throat, cough, expectoration,
runny nose, nasal discharge, fatigue, headache and earache.
Proven to be safe for both oral and pulmonary routes.



KEY INGREDIENTS

ALGAL OMEGA (DHA+EPA)

DHA : Oil & Powder
EPA : Oil & Powder



ALPHA MANGOSTEEN

Benefits: Anti acne
Key Active: Alpha Alpha Mangostin



ANDROGRAPHIS PANICULATA

Benefits : Respiratory Support, Immune Support,
Hepatoprotective, Cold, Cough, Flu
Key Actives: Andrographolides
10% - 95% : HPLC



BERBERINE

Plays a key role in blood sugar
(glucose) metabolism and
cardiovascular health



CENTELLA ASIATICA

Benefits : Skin Conditioning,
Under eye care, Anti-aging, Wound healing
Key Active: Asiaticoside - 95%
Madecassoside - 95%



HIMBERRY SEED/PULP OIL

Benefits: Skin Hydration,
Intimate hygiene, Anti aging, Anti acne
Key Active: Omega 3, 6, 7 & 9



PISTACHIO (MELATONIN)

Melatonin – Extracted in natural
form from Pistacia
Biological Properties – Improves
quality of sleep



SAW PALMETTO

Management of Benign prostatic
hyperplasia (BPH) and Alopecia
Oil 80% - 90% (GC)
Powder 45% (GC)



SALACIA

Benefits : Blood Sugar Management
Weight Management
Key Actives: Mangiferin 1-3%
upto 0.5% : Salacinol



TURMEFLO SF

Stain Free Curcumin Beadlets
Direct Compressibility
Cryopulverized Curcumin
95% Curcuminoid (HPLC)



TURMESOL WS

Water soluble curcumin with
enhanced Bioavailability
upto 50% Curcuminoid (HPLC)



ULTRA COLLAGEN

Hydrolyzed marine collagen peptides with low
molecular weight (200 - 800 Dalton) for complete
water solubility and excellent bioavailability
Specifications: 90% Protein (GV)





BOTANICAL EXTRACTS

Ambe manufactures a wide range of standardized herbal extracts that are used in healthcare industry

Name	Source	Biomarker	Standardization	Benefits
Aloe Vera Extract	<i>Aloe barbadensis</i>	Aloin	NMT 1 ppm : HPLC 100:1, 200:1	Digestive Health, Skin Health
Amla Extract	<i>Phyllanthus emblica</i>	Tannins	Upto 40% : Titration	Adaptogen, Antioxidant
Ashwagandha Root Extract	<i>Withania somnifera</i>	Total Withanolides	Upto 5% : HPLC Upto 10% : Gravimetry	Cognitive Health, Stress Management
Banaba Extract	<i>Lagerstroemia speciosa</i>	Corosolic Acid	1% - 20% : HPLC	Blood Sugar Management
Bacopa Extract	<i>Bacopa monnieri</i>	Bacosides	20% - 50% : HPLC	Cognitive health
Beet Root Extract	<i>Beta vulgaris</i>	Nitrate	10% : HPLC NLT 0.3 %: UV	Sports Nutrition, Cognitive Function, Antioxidant, Cardiovascular Health
Black Tea Extract	<i>Camellia sinensis</i>	Polyphenol W/S Caffeine	35% : UV 5% : HPLC	Cardiovascular Health, Gut Health, Cognitive Health, Antioxidant
Boswellia Extract	<i>Boswellia serrata</i>	Boswellic acids AKBA	Upto 90% : Titration Upto 60% : HPLC	Joint Health Support, IBS Support
Cinnamon Extract	<i>Cinnamomum zeylanicum</i>	Polyphenols	Upto 50% : UV	Support in Blood Sugar Management
Cocoa Extract	<i>Theobroma cacao</i>	Theobromine Polyphenols	Upto 35% : HPLC Upto 50% : UV	Cognitive Health, Cardiovascular health
Coleus Extract	<i>Coleus forskohlii</i>	Forskohlin	Upto 50% : HPLC	Boost Metabolism, Weight Management
Fenugreek Extract	<i>Trigonella foenum-graecum</i>	Saponin 4-HIL	Upto 65% : Gravimetry 20% : HPLC	Blood Sugar Management, Cardiovascular Health, Hair Nourishment, Lactation
Garcinia Extract	<i>Garcinia cambogia</i>	Hydroxycitric Acid	Upto 70% : HPLC	Weight Management, Boost Metabolism
Ginseng Extract	<i>Panax ginseng</i>	Ginsenoside	Upto 60% : HPLC	Adaptogen, Boost Stamina
Ginger Extract	<i>Zingiber officinale</i>	Gingerols	5% - 25% : HPLC	Digestive Support, Joint Health
Green Coffee Extract	<i>Coffea robusta</i>	Chlorogenic Acids Caffeine	20% - 70% : HPLC NMT 2% : HPLC	Blood Sugar Management, Weight Management
Green Tea Extract	<i>Camellia sinensis</i>	Polyphenol Catechin	Upto 98% : UV Upto 70% : HPLC	Stress Management, Weight Management, Boost Metabolism
Guggul Extract	<i>Commiphora mukul</i>	E & Z Guggulsterones	Upto 2.5% : HPLC Upto 10% : UV	Cardiovascular Health, Joint Health
Gymnema Extract	<i>Gymnema sylvestre</i>	Gymnemic Acid	Upto 75% : Gravimetry	Blood Sugar Management
Licorice Extract	<i>Glycyrrhiza glabra</i>	Glabridin Glycyrrhizic Acid De-Glycyrrhizinated Licorice	Upto 40% : HPLC Upto 60% : HPLC NMT 3% : HPLC	Skin Lightening, Immune Support, Respiratory Health
Moringa Extract	<i>Moringa oleifera</i>	Protein	Upto 60% : Gravimetry	Blood Sugar Management, Nutritional Support
Mucuna Extract	<i>Mucuna pruriens</i>	L-Dopa	10% - 60% : HPLC	Energy Support, Men's Health
Safed Musli Extract	<i>Chlorophytum borivilianum</i>	Saponins	Upto 60% : Gravimetry	Men's Health
Shilajit Extract	<i>Ashphaltum</i>	Fulvic acid Fulvic acids (Total Acids)	Upto 2.5% : Gravimetry Upto 80% : Gravimetry	Adaptogen, Cognitive Function, Immunity, Vigour & Vitality, Stamina Booster
Senna Extract	<i>Cassia angustifolia</i>	Sennosides	Upto 20% : HPLC Upto 60% : UV	Laxative
Tribulus Extract	<i>Tribulus terrestris</i>	Saponins	Upto 60% : Gravimetry	Men & Women Health
Tulsi Extract	<i>Ocimum sanctum</i>	Ursolic Acid Bitters	2.50% : HPLC Upto 10% : Gravimetry	Immunity, Respiratory health, Stress Management
Turmeric Extract	<i>Curcuma longa</i>	Curcuminoids	95% : HPLC	Immunity, Skin, Joint, Cognitive Health
Valerian Extract	<i>Valeriana officinalis</i>	Valerenic acid	0.8% Powder : HPLC 10% Oleoresin : HPLC	Sleep Management, Stress Management



ORGANIC PRODUCTS

Name	Source	Biomarker	Standardization	Benefits
Amla Extract	<i>Phyllanthus emblica</i>	Tannins	50% : Titration	Antioxidant, Immune Support
Amla Juice Powder	<i>Phyllanthus emblica</i>	–	–	Antioxidant, Immune Support
Ashwagandha	<i>Withania somnifera</i>	Total Withanolides	2.5% : HPLC Upto 12% : Gravimetry	Adaptogen, Stress/ Anxiety Management, Cognitive Health
Barley Grass	<i>Hordeum vulgare</i>	–	–	Immune Support, Detoxification, Digestive Health
Bacopa	<i>Bacopa monnieri</i>	Saponin Bacosides	upto 20% : Gravimetry upto 50% : HPLC	Cognitive Enhancement, Neuroprotective Effect
Beet Root	<i>Beta vulgaris</i>	Nitrate	10% : HPLC	Improve Blood Circulation, Cardiovascular Health, Sport Nutrition
Castor Oil	<i>Ricinus communis seeds</i>	Ricinoleic Acid	85% : GC	Skin Health, Boost Hair Growth
Chilli Powder	<i>Capsicum annum</i>	–	–	Boost Metabolism, Digestive Health
Curcumin	<i>Curcuma longa</i>	Curcuminoids	10% WS : HPLC	Antioxidant, Immune Support
Curcuminoids	<i>Curcuma longa</i>	Curcuminoids	95% : HPLC	Antioxidant, Immune Support, Cognitive Health
Ginger	<i>Ginger</i>	Gingerol	5-20% : HPLC	Anti-inflammatory, Antioxidant
Kalmegh	<i>Andrographis paniculata</i>	Andrographolide	95% : HPLC	Immune Support, Respiratory Health
Moringa Seed	<i>Moringa oleifera</i>	Protein	60% : Gravimetry	Blood Sugar Management, Immune Support
Pineapple Juice Powder	<i>Ananas comosus</i>	–	–	Antioxidant, Immune Support, Digestive Aid, Bone Health
Turmeric	<i>Curcuma longa</i>	–	–	Immunity, Skin Health
Wheat Grass	<i>Triticum aestivum</i>	–	–	Immune Support, Detoxification, Digestive Health

ORGANIC NATURAL VITAMINS & MINERALS

Name	Source	Standardization	Benefits
Beta Carotene	<i>Carrot root (Daucus carota)</i>	2% : UV	Eye Health, Skin Protection
Biotin	<i>Tulsi Leaves (Ocimum sanctum)</i>	0.25%: HPLC	Hair and Skin Health, Metabolism
Niacin	<i>Tulsi Leaves (Ocimum sanctum)</i>	3.6% : HPLC	Skin Health, Neuroprotective Effects
Vitamin B9	<i>Citrus limon peel</i>	5% : HPLC	Fetal Development, Healthy Cell Growth
Zinc	<i>Guava Leaves</i>	4% : ICPMS	Immune Function, Skin Health
Vitamin B12	<i>Shiitake mushroom</i>	0.1% : HPLC	RBC Formation, Nerve Function
Vitamin E	<i>Bixa orellana</i>	upto 35%: HPLC	Antioxidant, Immune Support
Iron	<i>Curry leaves</i>	3.6% : ICPMS	Hemoglobin Production, Immune Support
Magnesium	<i>Quinoa seeds</i>	4% : ICPMS	Bone & Teeth Health, Muscle/Nerve Function
Multivitamin	<i>Citrus limon, Amla Fruit, Guava leaves, Ocimum sanctum, Bixa Orellana</i>	HPLC	Immunity, Healthy Metabolism, Enhance Energy,
Vitamin B Complex	<i>Citrus limon, Curry Leaves, Guava leaves, Quinoa seeds</i>	HPLC	Healthy Metabolism, Neuroprotective Effects
Vitamin C	<i>Amla Extract Powder</i>	50% : HPLC	Antioxidant, Immune Support
Selenium Powder	<i>Sunflower Seeds</i>	NLT 5000 mg/kg: ICPMS	Immune support, Anti -Inflammatory

AMBE PHYTOEXTRACTS PVT. LTD.

(FSSC 22000, FSMA, GMP, HALAL, KOSHER, ORGANIC, SEDEX & ISO 9001:2015 CERTIFIED CO.)

Website: www.ambe-group.com | E-mail: info@ambe-group.com

Corporate Office:- A - 144, Sector - 63, Noida, Uttar Pradesh - 201301, India